

Add a USB printer (s) when sharing USB device (s)

(MFP series products only)

● Add a USB printer (s) when sharing USB device (s)

If you want to use a printer(s) by sharing a USB device(s), you can add your USB printer to your computer when sharing a USB device (s).

Some special printers can't add printers through the "Standard TCP / IP port", but they can connect to printers by sharing USB devices to print. For example, Canon's LBP series (CAPT language) and some Ricoh models (DDST language).

You can share any USB devices in your LAN through the wired or wireless IP address of the server in your LAN.

Before connecting and sharing USB devices, please first install the driver of a USB printer you want to use on your PC(s).

After driver of a USB printer has installed on your PC(s). You can add the USB printer for your computer, and then you can use it as if your USB printer is directly connected to the USB port of your PC(s).

Add a USB printer

1. Run the " USB connection tool " and connect to your USB printer.
Please read the "5. Share a USB device (s)"

When installing a USB printer, please make sure that your USB printer and server are powered on and work, and the USB printer is connected to the USB port of the server.

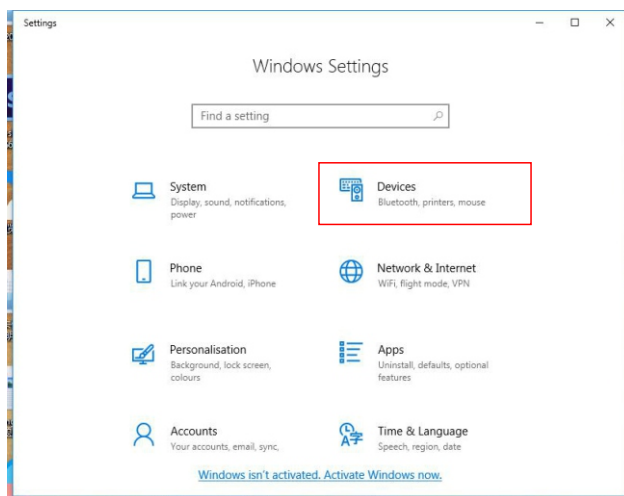
As shown in the picture:



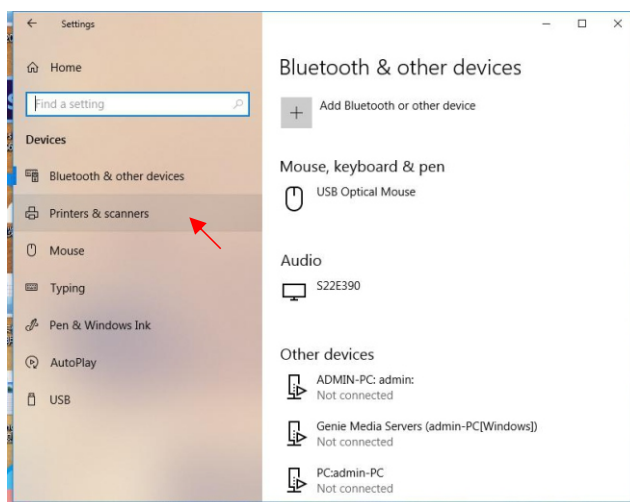
2. Open your PC "Settings" on the "Start"



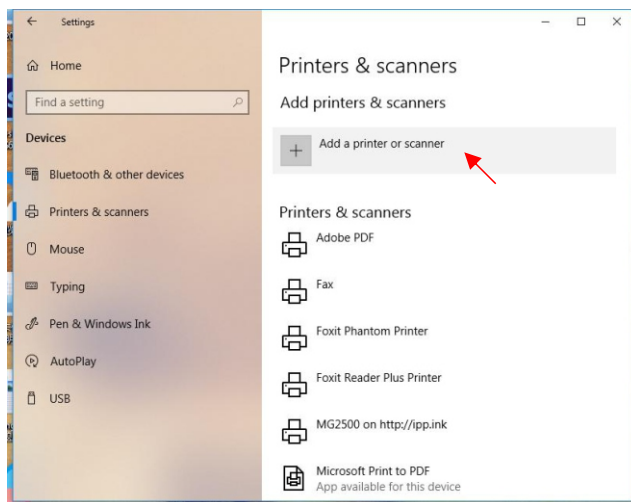
3. Click the "Devices".



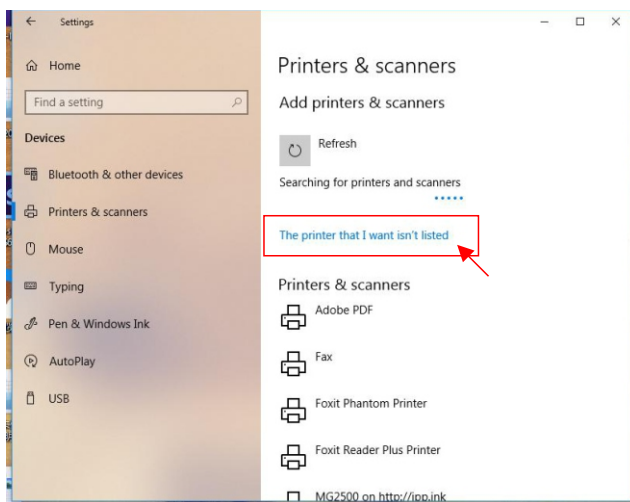
4. Click the "Printers & Scanners"



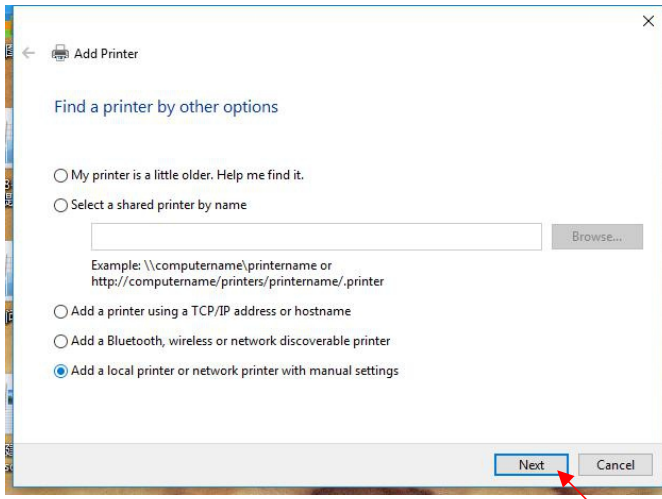
5. Click the “Add a printer or scanner”



6. Click "The printer that I want isn't listed"

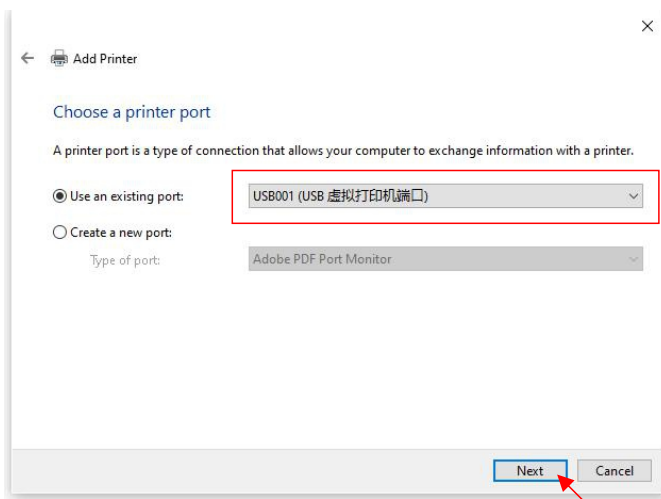


7. Select "add a local printer or network...", and then click "Next".

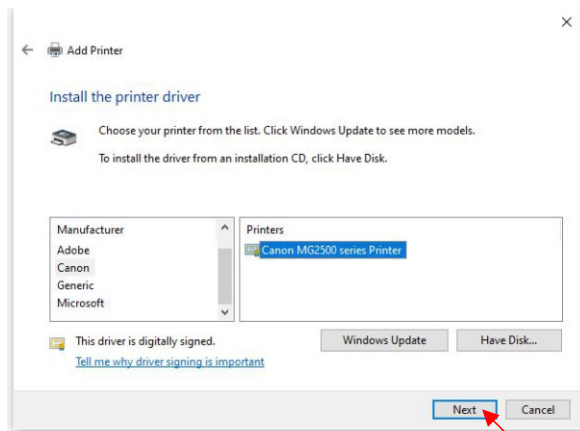


8. Select "USB001 (USB 虚拟打印机端口)" on the drop-down list of options of the Use an existing port:

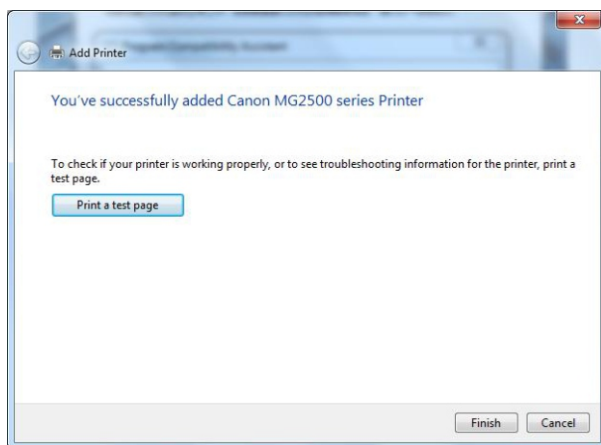
Then click " Next ".



9. Install the printer driver. Select your printer driver and click "next"



10. Then all are default and click "Next". If you have special needs, please modify them by yourself.



The USB printer addition completed.

Note: when you use the printer installed by USB, the "USB connection tool" must be run on the computer at the same time and connect to the USB printer.